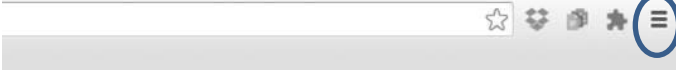


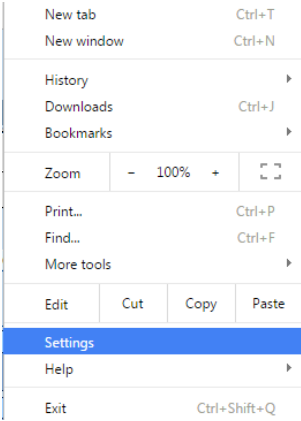
# Having difficulties signing into ParentVue/StudentVue

**Clear cache instructions-** When using Google Chrome web browser

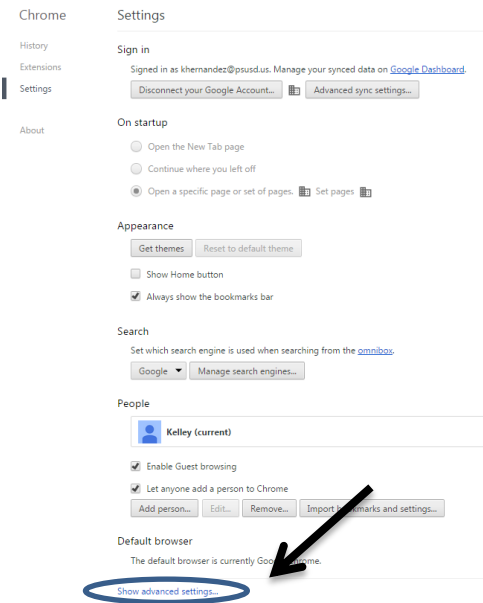
1. Click on the 3 lines, top right corner of your screen



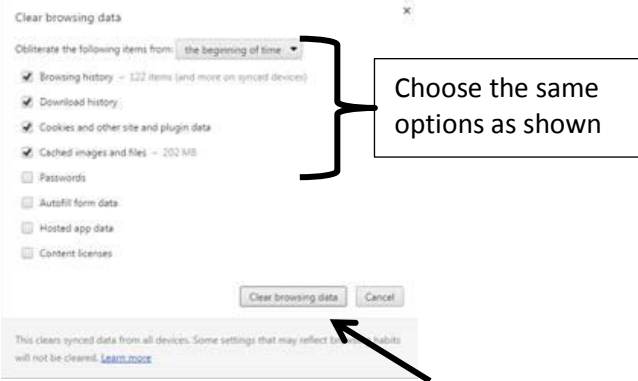
2. From the drop down menu, Choose Settings



3. Choose 'Show advanced settings' in blue font at the bottom



4. Under Privacy, choose 'Clear browsing data...'



5. Then choose 'Clear browsing data'

6. Now try signing into ParentVue/StudentVue